



## WARNING!

**ONLY USE APPROVED ARBORISTS**

Never trim trees near network power lines yourself as it is dangerous and may cause electrocution.

Only professionals approved by your electricity network company may trim trees close to power lines.

### **Get the professionals to do the job safely**

Professional arborists such as Asplundh can trim trees around network and service lines safely and efficiently. For a free quote or to enquire about getting your trees trimmed call:

**0800 4 ASPLUNDH  
(0800 4 277 586)**

### **ASPLUNDH'S BIG TREE GEAR**

Our land clearance services include tree felling and removal, onsite mulching using tractors, stump removal and large scale land conversion. We have proven experience clearing difficult access sites as well as tree felling using heavy machinery.



Asplundh has the most extensive fleet of arboricultural and land conversion plant in New Zealand including excavators, whole tree chippers, land clearing tractors, green waste and transport trucks and heavy equipment transporter units.

### **WE OFFER:**

- Free quotations
- Tree pruning/removal including large and difficult trees
- Specialised tree pruning/removal in confined or limited access areas
- Shelterbelt pruning/removal
- Professional crews who are experienced in dealing with dangerous trees
- Mulching/grinding
- Power line clearance
- All vegetation clearance
- Chip/mulch for cattle stand-off pads and calf sheds

We are fully insured for your protection.

Contact us today to find out how we can help with your land clearance project.

**0800 4 ASPLUNDH**

**Clive Bowman: 0275 242 981**

**Graeme Wisnewski: 0276 644 563**

[www.asplundh.co.nz](http://www.asplundh.co.nz)

[www.asplundh.co.nz](http://www.asplundh.co.nz)

**ASPLUNDH**  
*specialists in vegetation management*

## ELECTRICITY (HAZARDS FROM TREES) REGULATIONS 2003

For public safety and to protect your power supply, trees need to be kept at a safe distance from power lines. The Electricity (Hazards from Trees) Regulations 2003 set out the rules which clarify that tree owners are responsible for arranging the cutting or trimming of trees growing too close to power lines. They also outline the electricity networks' responsibilities.

**When did the regulations come into force?**  
1 July 2005

**Why were the regulations put in place?**

To protect the supply of our electricity and to ensure public safety.

When trees grow too close to power lines they can become a dangerous hazard. They can interrupt the power supply, cause surges and appliance damage, fire, electric shocks or electrocution.



**Who needs to know about the regulations?**

Anyone who has trees on or around their property that grow close to power lines or electricity conductors.

**What do the regulations do?**

- Set the safe distance between trees and power lines that must be kept at all times
- Set the rules around who is responsible for arranging the trimming and cutting of trees to make sure the distance between the lines and trees is maintained
- Specify the legal consequences for tree owners if damage/accidents occur
- Provide a system for discussing and settling any disputes

## IMPORTANT TERMS AND DEFINITIONS

**Cut/Trim Notice (CTN):** A CTN is a legal document issued by the line owner advising a tree owner that they must arrange for the tree to be cut or trimmed as it is inside the Growth Limit Zone. The tree owner must comply within the timeframe stated (usually 45 days).

**First Cut or Trim:** This is provided free of charge by the electricity network as long as the tree has not been cut before, is not covered by any previous arrangements or is part of a horticultural shelterbelt.

**'No Interest':** This is something a tree owner can declare if:

- the tree was naturally sown, or
- the tree owner genuinely believed when the tree was planted that it would not interfere with lines or conductors when fully grown.

To declare 'no interest' you must contact your power company. If the tree meets the 'no interest' criteria the line owner takes responsibility for cutting the tree (but does not take ownership of the tree). Note: the line owner can decide if the tree should be cut or felled.

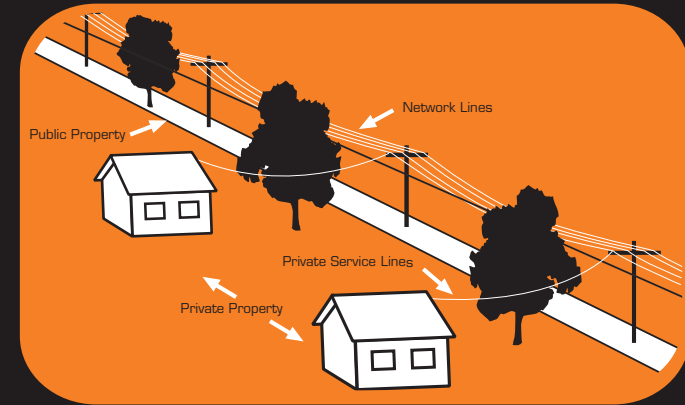
**Growth Limit Zone (GLZ):** This is the minimum space around power lines that must be kept clear of any trees and vegetation. The GLZ varies depending on the voltage of the power lines.

**Notice Zone:** This refers to the space that extends a maximum of one metre beyond the GLZ. If vegetation is within the Notice Zone we recommend you contact your electricity provider to discuss clearance.

## WHO IS RESPONSIBLE FOR ENSURING TREES MEET THE REGULATIONS?

### ELECTRICITY NETWORK COMPANIES' RESPONSIBILITIES

- Notify tree owners with a Cut or Trim Notice if they become aware of trees growing too close to power lines.
- Cut or trim the tree for free unless the tree has been cut before, there is a previous arrangement or it is a horticultural shelterbelt.
- Undertake any work in relation to a tree if they become aware that there is an immediate danger to people or property due to that tree.



### TREE OWNERS' RESPONSIBILITIES

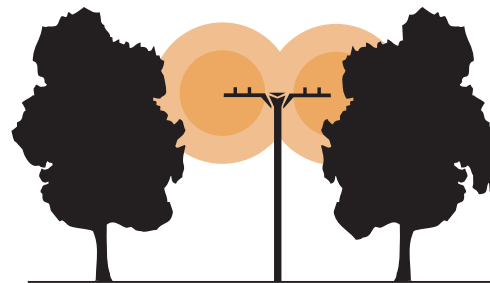
#### Network power lines

- After the first cut or trim, it is the tree owner who is responsible for keeping the tree clear from power lines.
- Tree owners must comply with any Cut or Trim notices they receive within the time stated but for safety reasons, they must not cut or trim the trees themselves.
- Failure to comply with a notice can lead to fines of up to \$10,000 (owners will also be liable if the tree damages network power lines or equipment).
- Tree owners who do not comply with Cut or Trim notices are responsible for the costs of an electricity network company undertaking work on a tree if it presents an immediate danger to people or property.

#### Service lines

- The property owner is responsible for the maintenance and repair of private service lines on their property (including trimming trees near the lines).
- Trees growing near private service lines are not covered by the regulations, however the same dangers exist around these lines and extreme caution should be taken at all times.

## NOTICE AND GROWTH LIMIT ZONES



| VOLTAGE     | NOTICE ZONE (metres) | GROWTH LIMIT ZONE (metres) |
|-------------|----------------------|----------------------------|
| 33kV        | 3.5                  | 2.5                        |
| 11kV        | 2.6                  | 1.6                        |
| 400V / 230V | 1.5                  | 0.5                        |